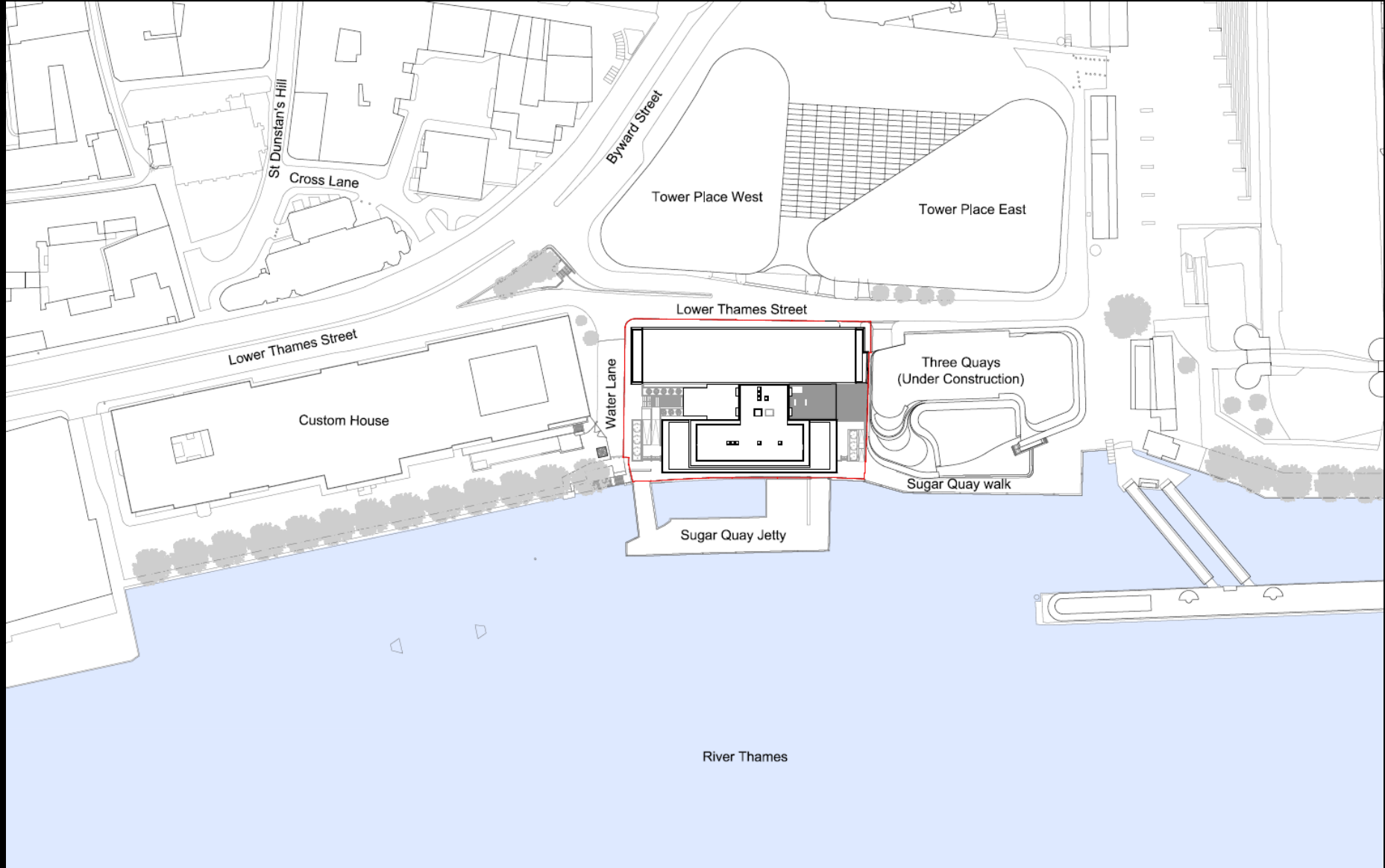


Planning & Transportation Committee

12th January 2016

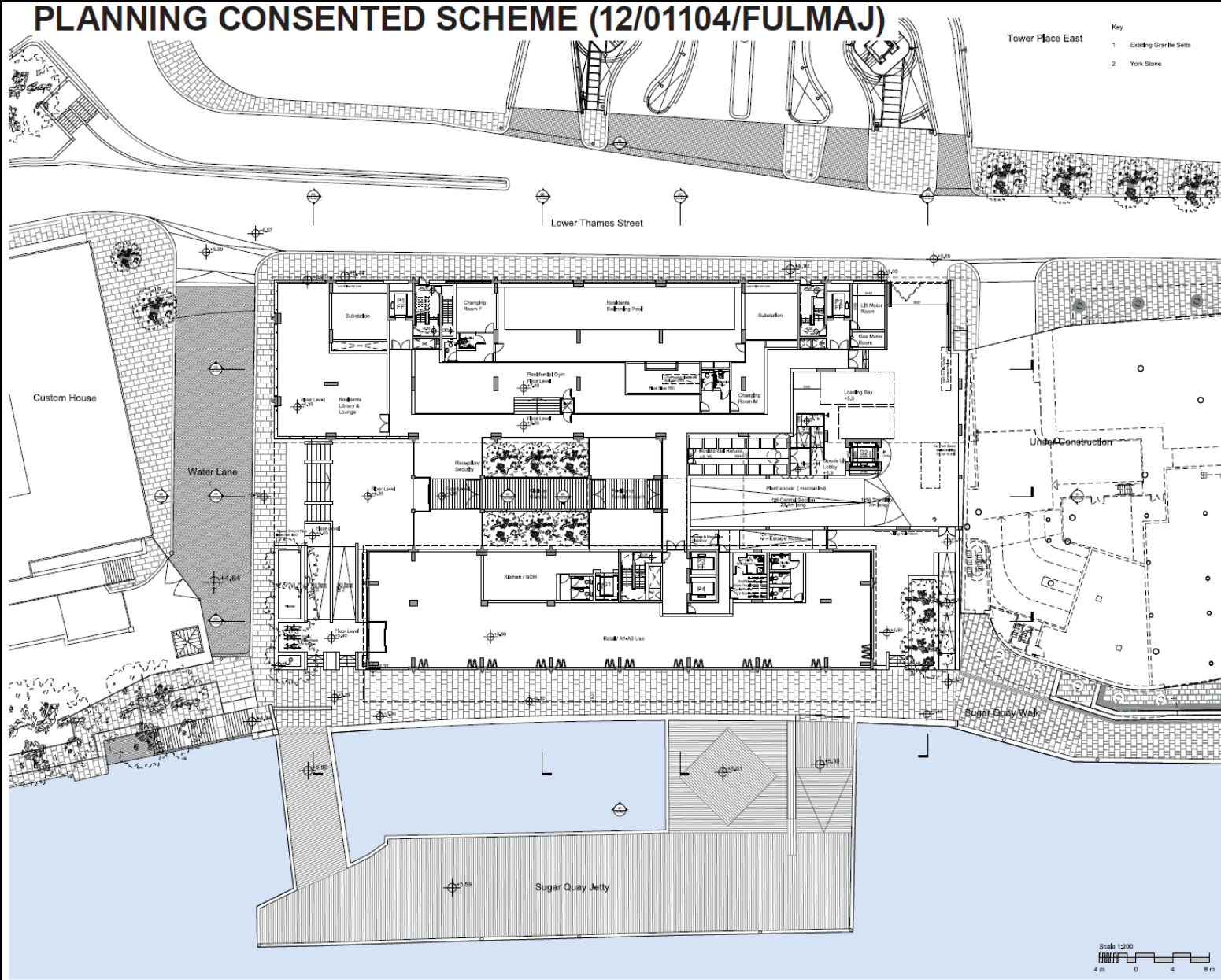
Sugar Quays, Lower Thames Street



Proposed site location plan

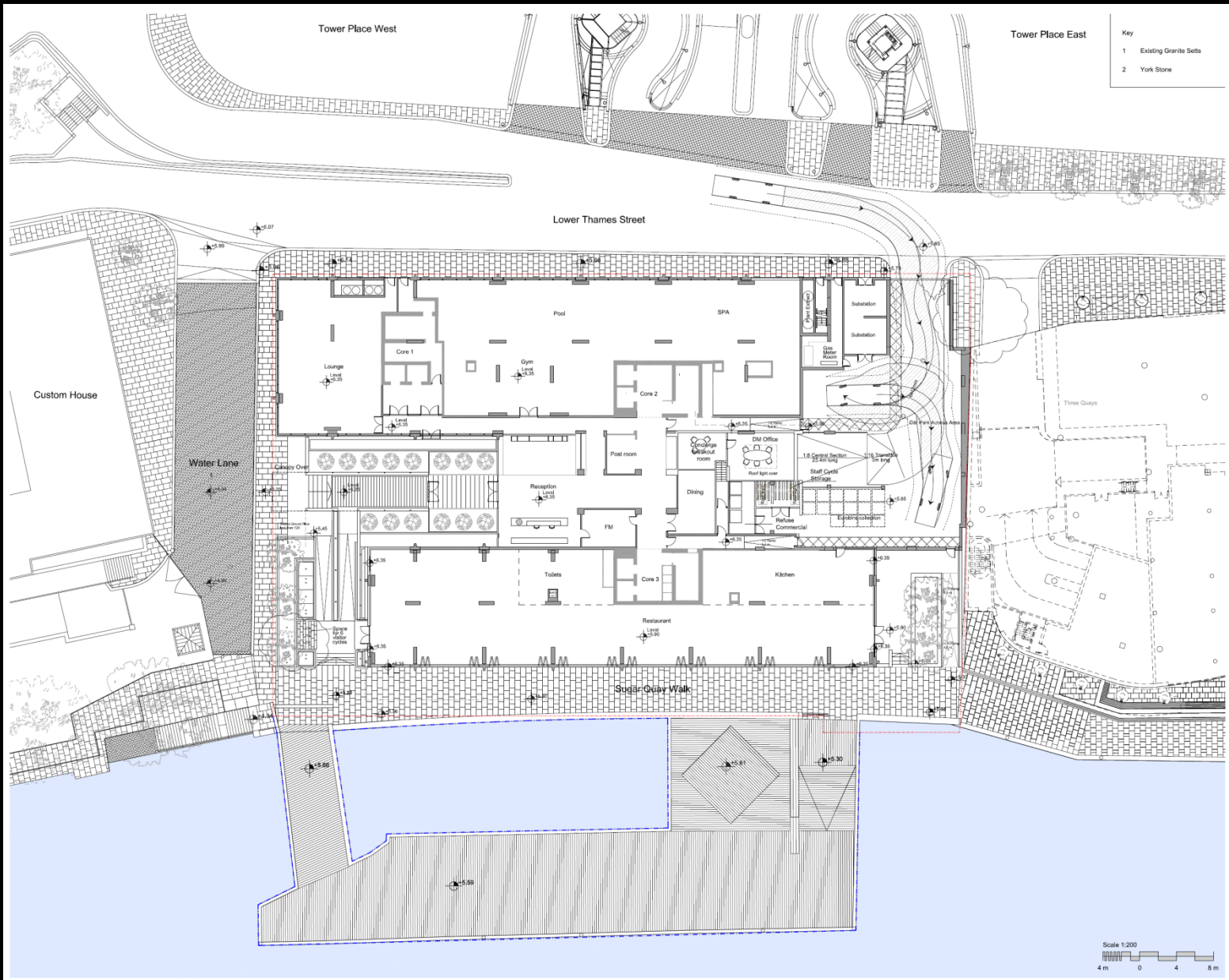
Sugar Quays, Lower Thames Street

PLANNING CONSENTED SCHEME (12/01104/FULMAJ)



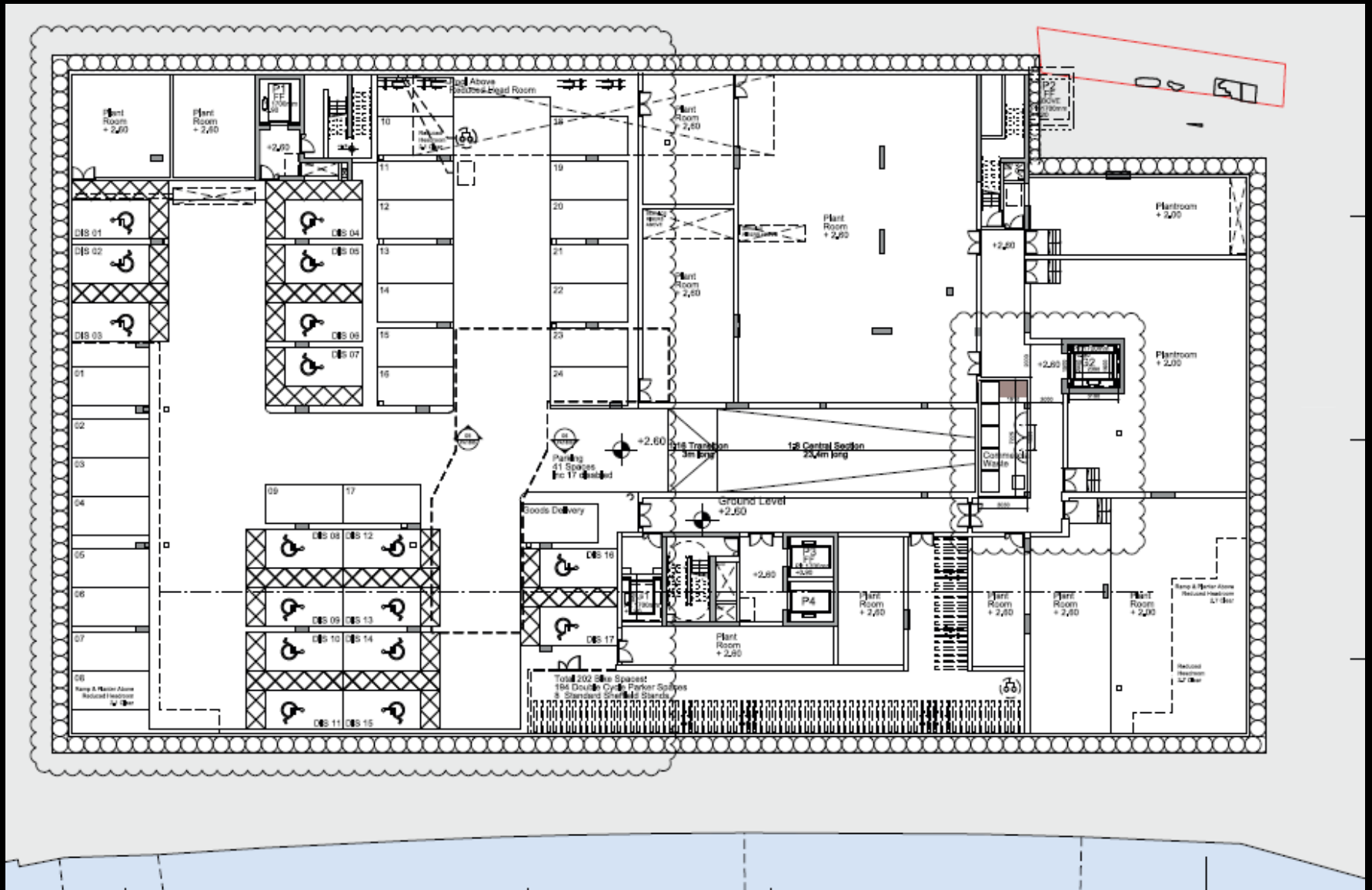
Approved ground floor

Sugar Quays, Lower Thames Street



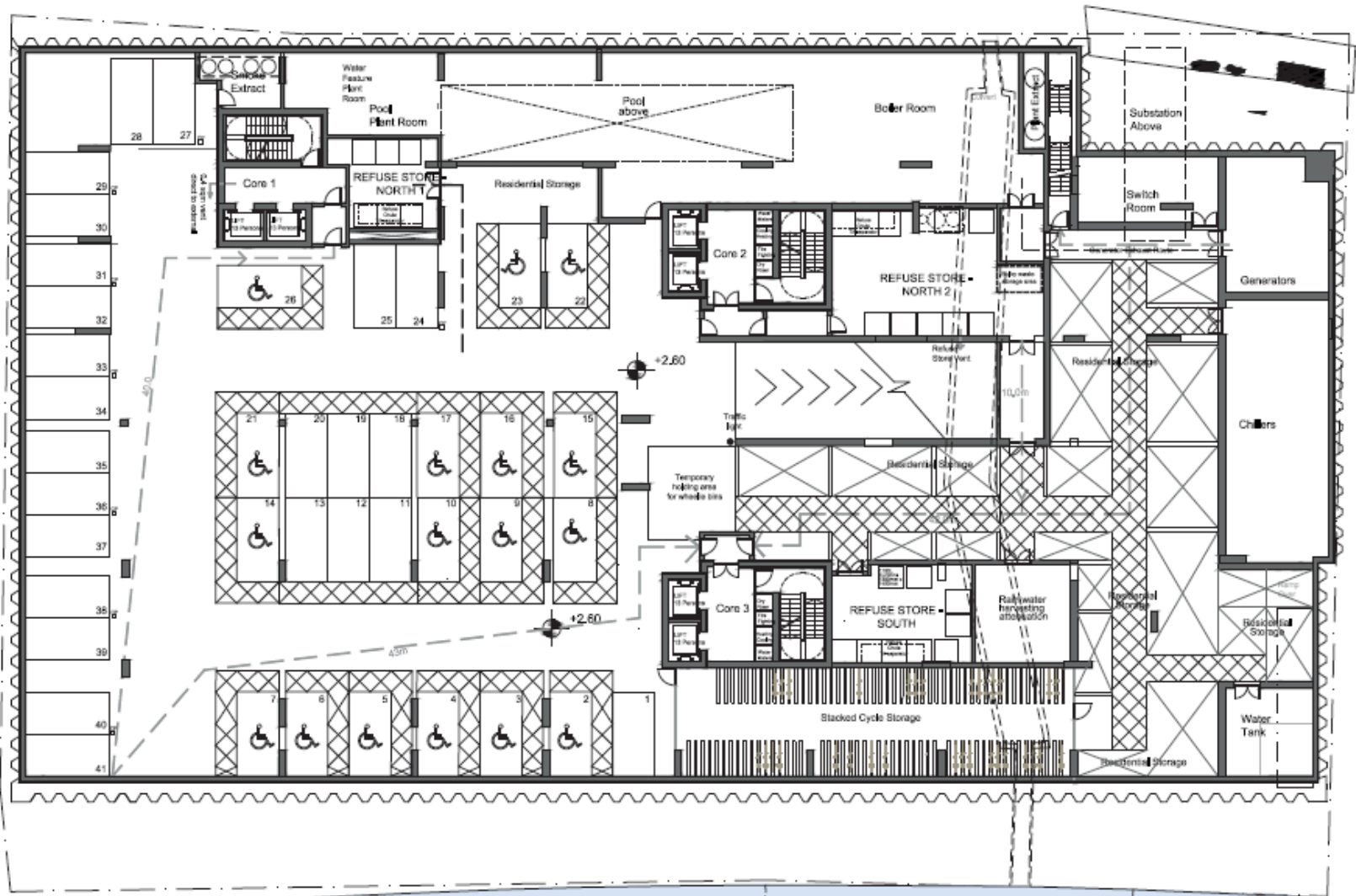
Proposed ground floor

Sugar Quays, Lower Thames Street



Approved basement floor

Sugar Quays, Lower Thames Street



Proposed basement floor

Sugar Quays, Lower Thames Street

PLANNING CONSENTED SCHEME (12/01104/FULMAJ)

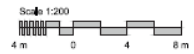
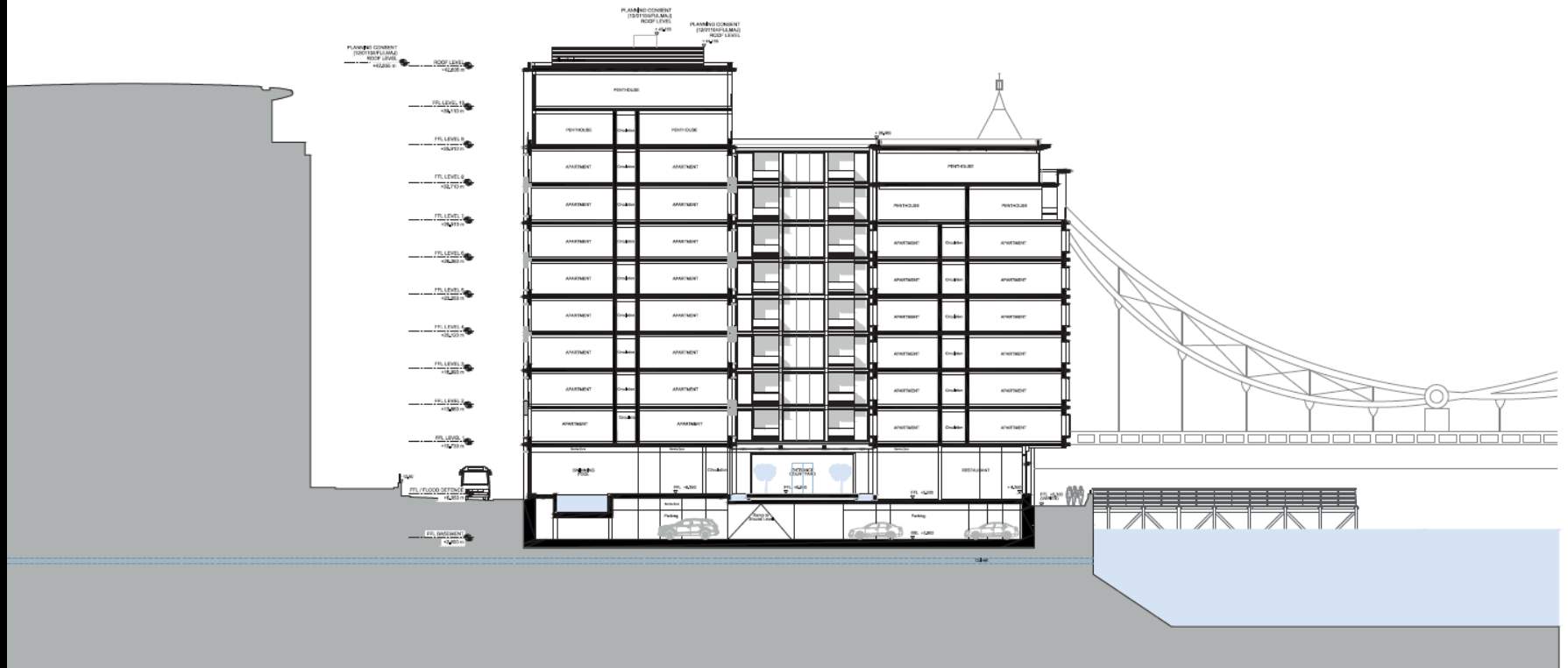


Scale 1:200

Approved section BB cross section

Sugar Quays, Lower Thames Street

SECTION 73 APPLICATION



Proposed section BB

Sugar Quays, Lower Thames Street



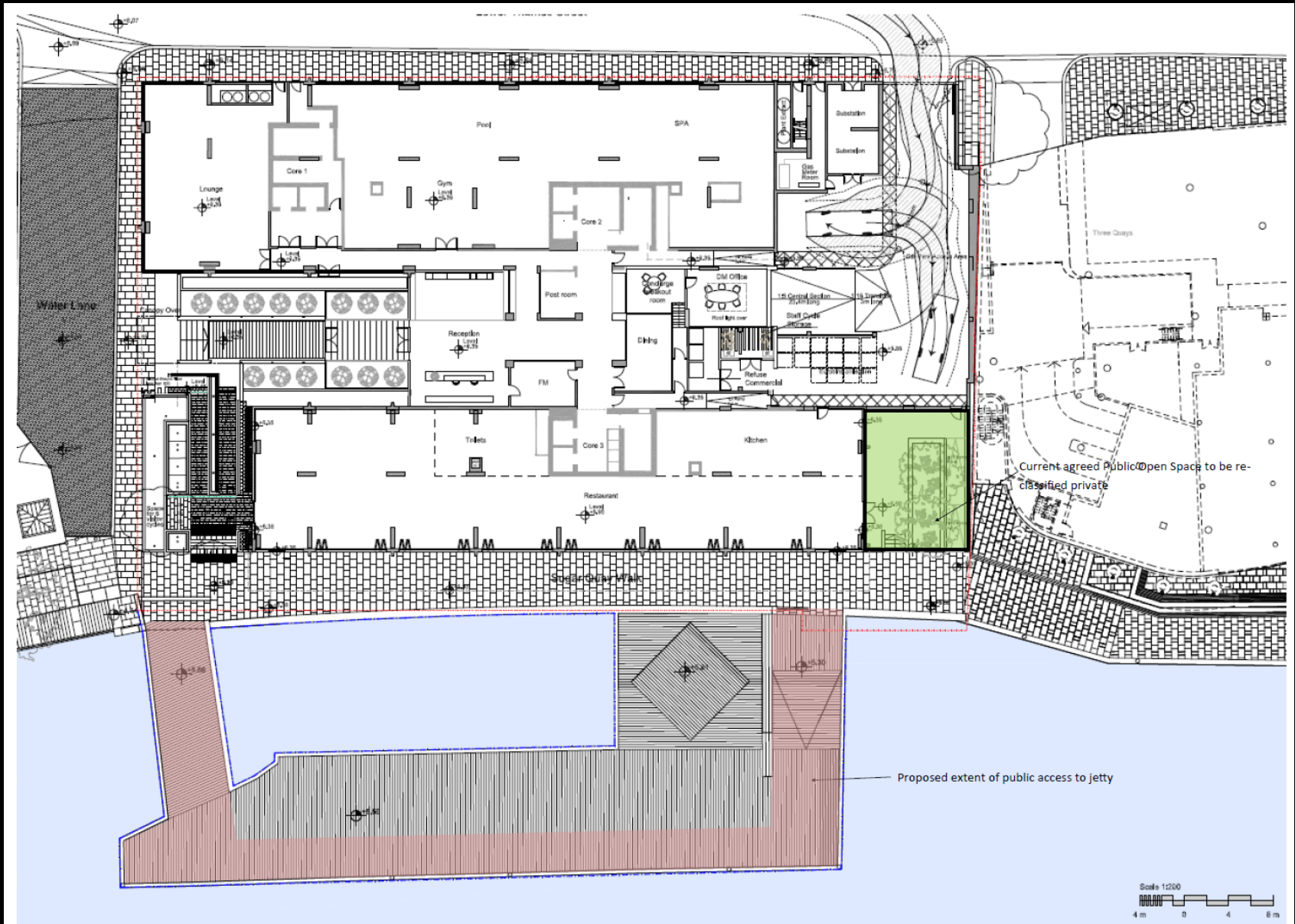
Approved scheme

Sugar Quays, Lower Thames Street



Proposed scheme

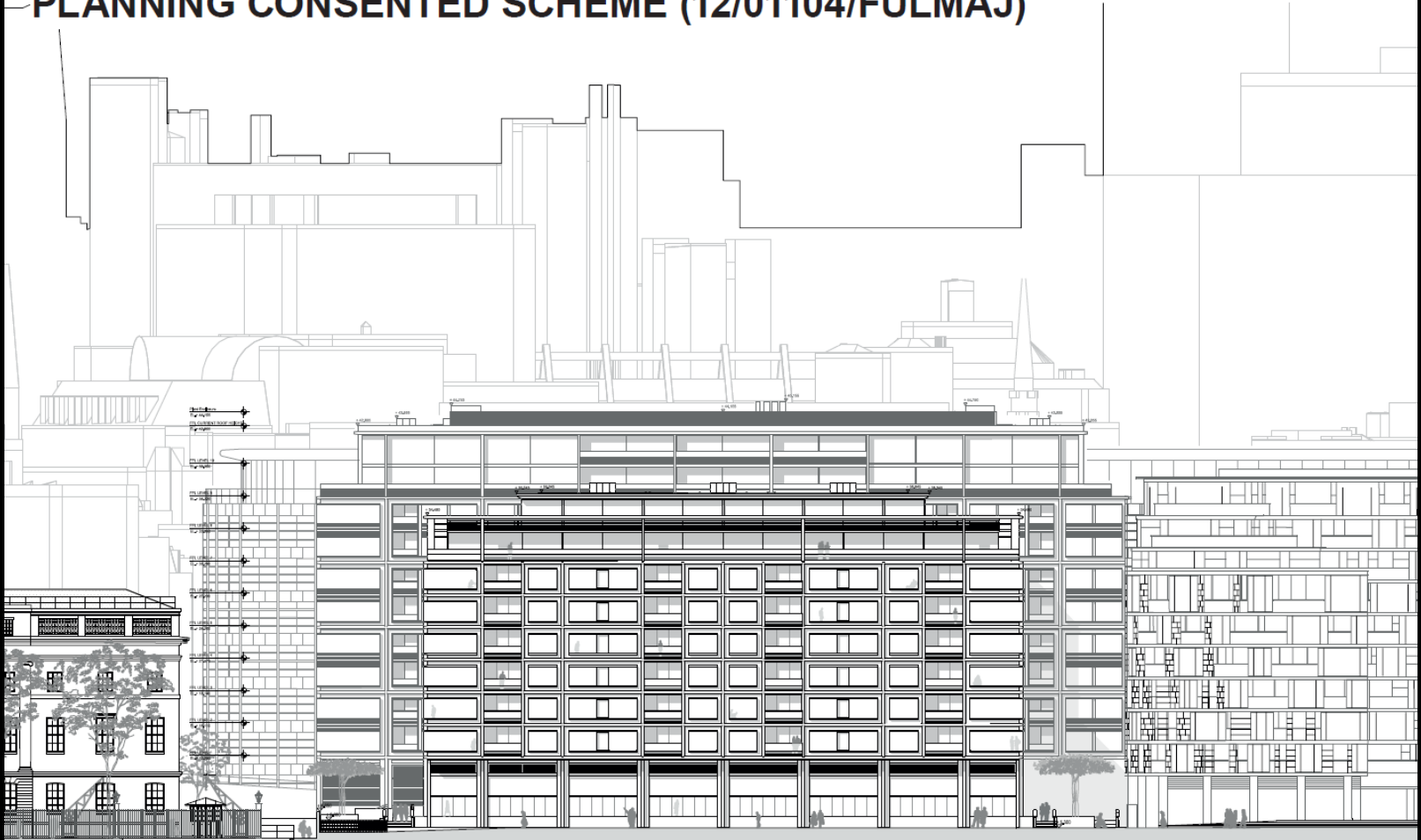
Sugar Quays, Lower Thames Street



Proposed jetty ground floor

Sugar Quays, Lower Thames Street

PLANNING CONSENTED SCHEME (12/01104/FULMAJ)

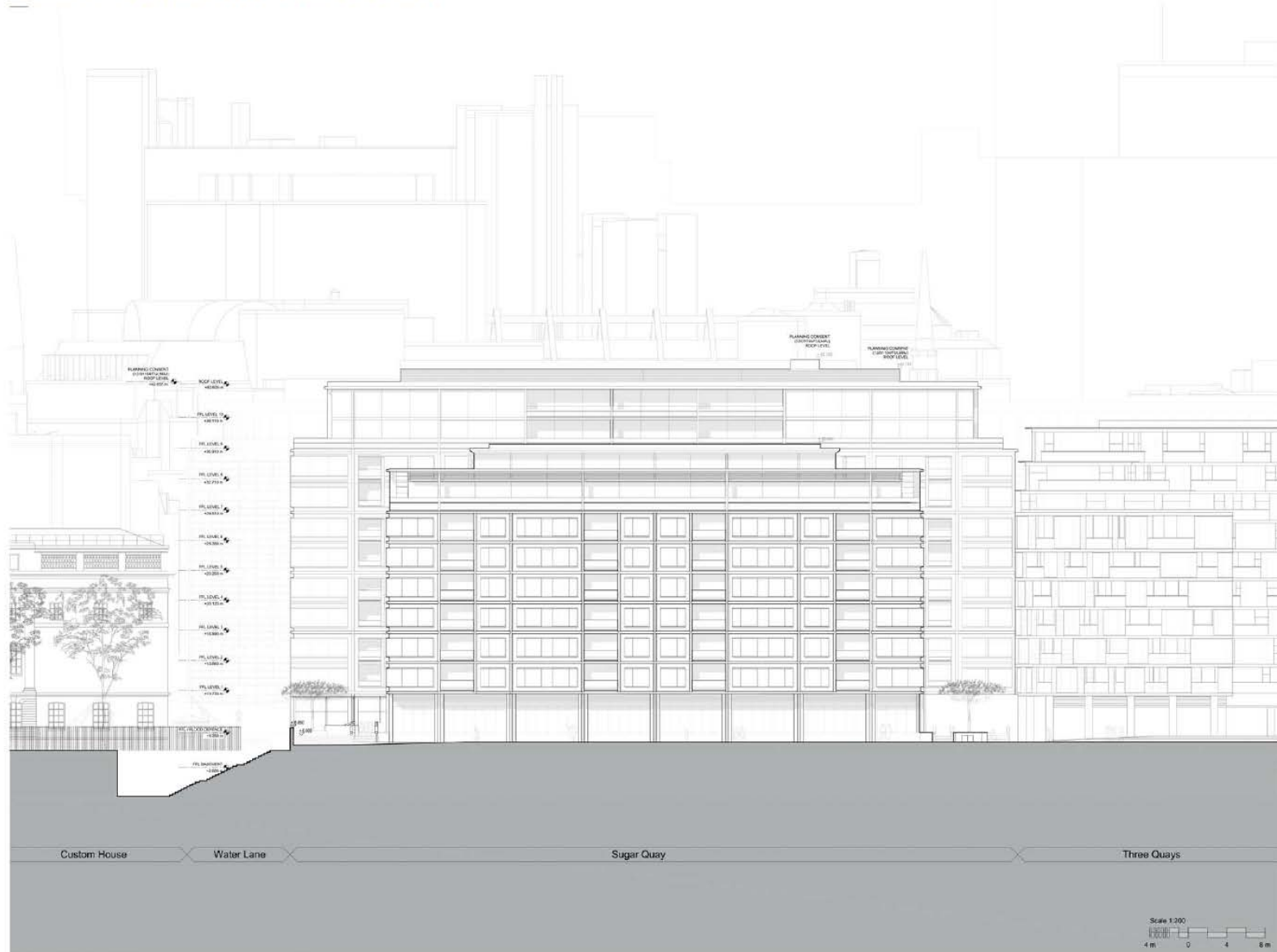


Scale 1:200
4m 0 4 8m

Approved south elevation

Sugar Quays, Lower Thames Street

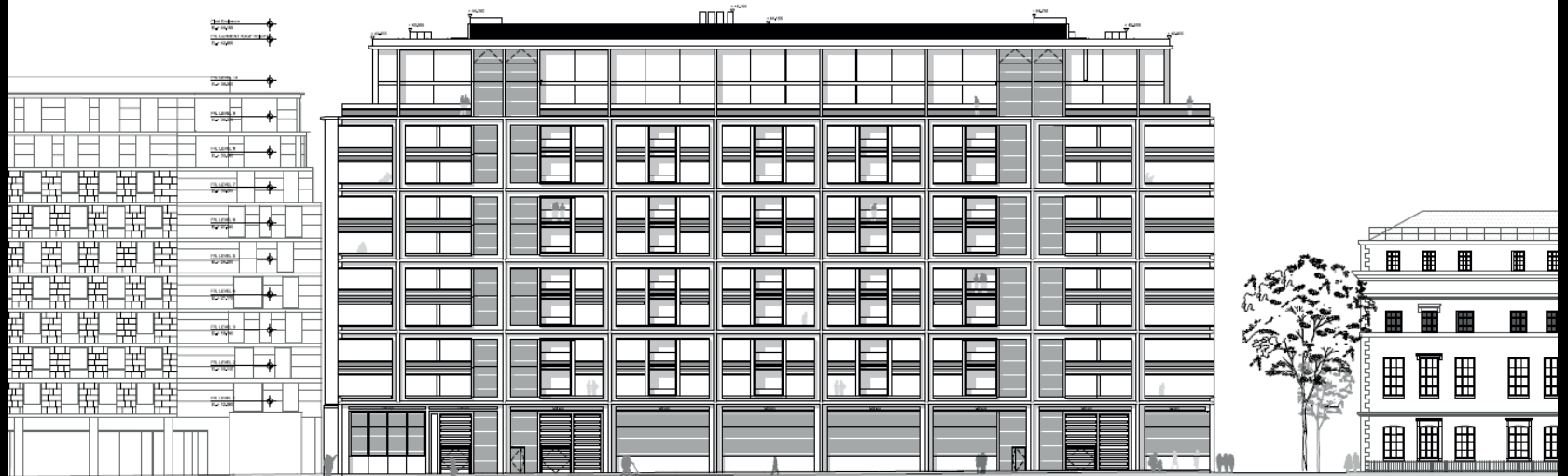
SECTION 73 APPLICATION



Proposed south elevation

Sugar Quays, Lower Thames Street

PLANNING CONSENTED SCHEME (12/01104/FULMAJ)

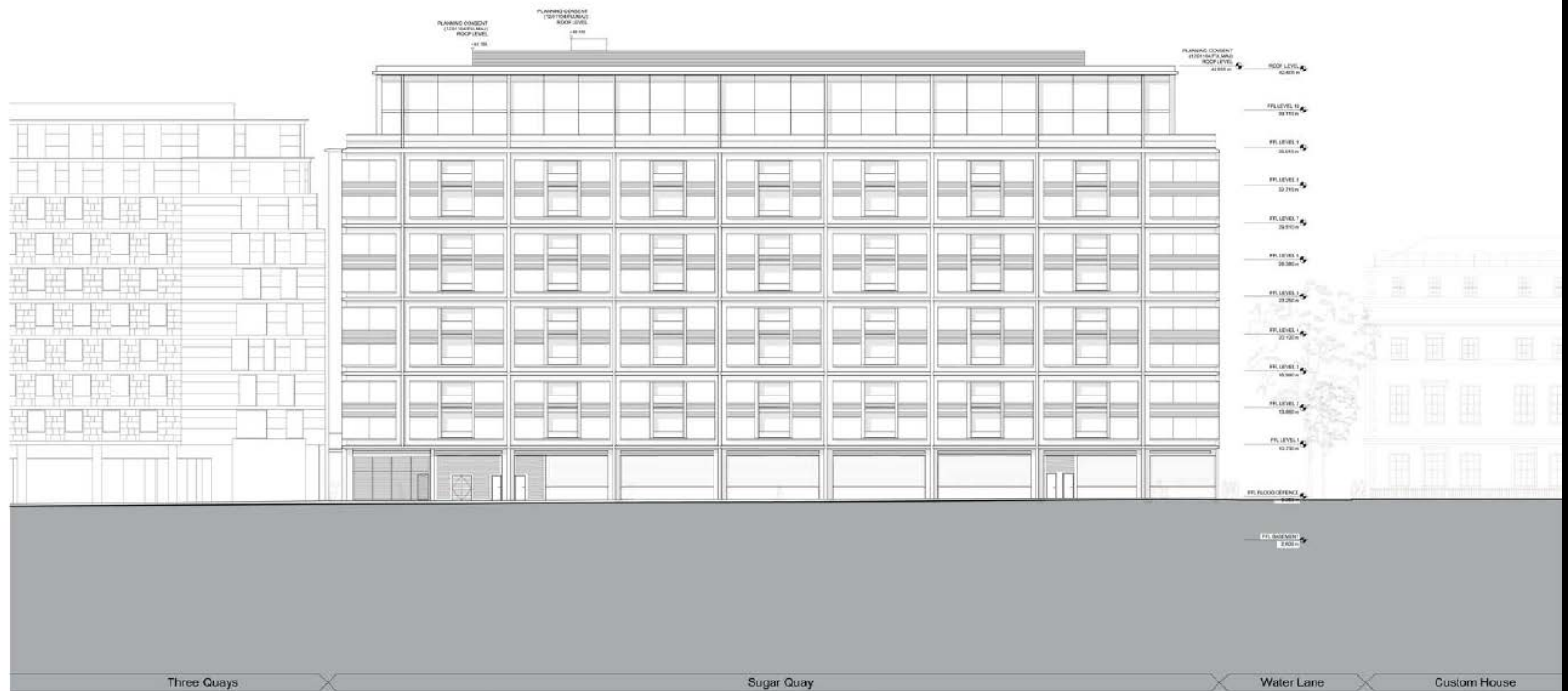


Scale 1:200
4 m 0 4 8 m

Approved north elevation

Sugar Quays, Lower Thames Street

SECTION 73 APPLICATION



Proposed north elevation

Planning & Transportation Next Committee

2nd February 2016